

TABLE 9 DIMENSIONS FOR SPIRAL-WOUND GASKETS USED WITH ASME B 16.5 FLANGES

Flange Size (NPS)	Outside Diameter of Gasket (2)		Inside Diameter of Gasket by Class (3)								Outside Diameter of Centering Ring by Class (4)					
	Classes 150, 300, 400, 600	Classes 900, 1500, 2500	150	300	400 (5)	600	900 (1,5)	1500 (1)	2500 (1,5)	150	300	400 (5)	600	900 (5)	1500	2500 (5)
	1/2	1.25	1.25	0.75	0.75	...	0.75	...	0.75	0.75	1.88	2.13	...	2.13	...	2.50
3/4	1.56	1.56	1.00	1.00	...	1.00	...	1.00	1.00	2.25	2.63	...	2.63	...	2.75	3.00
1	1.88	1.88	1.25	1.25	...	1.25	...	1.25	1.25	2.63	2.88	...	2.88	...	3.13	3.38
1 1/4	2.38	2.38	1.88	1.88	...	1.88	...	1.56	1.56	3.00	3.25	...	3.25	...	3.50	4.13
1 1/2	2.75	2.75	2.13	2.13	...	2.13	...	1.88	1.88	3.38	3.75	...	3.75	...	3.88	4.63
2	3.38	3.38	2.75	2.75	...	2.75	...	2.31	2.31	4.13	4.38	...	4.38	...	5.63	5.75
2 1/2	3.88	3.88	3.25	3.25	...	3.25	...	2.75	2.75	4.88	5.13	...	5.13	...	6.50	6.63
3	4.75	4.75	4.00	4.00	...	4.00	3.75	3.63	3.63	5.38	5.88	...	5.88	6.63	6.88	7.75
4	5.88	5.88	5.00	5.00	4.75	4.75	4.75	4.63	4.63	6.88	7.13	7.00	7.63	8.13	8.25	9.25
5	7.00	7.00	6.13	6.13	5.81	5.81	5.81	5.63	5.63	7.75	8.50	8.38	9.50	9.75	10.00	11.00
6	8.25	8.25	7.19	7.19	6.88	6.88	6.88	6.75	6.75	8.75	9.88	9.75	10.50	11.38	11.13	12.50
8	10.38	10.13	9.19	9.19	8.88	8.88	8.75	8.50	8.50	11.00	12.13	12.00	12.63	14.13	13.88	15.25
10	12.50	12.25	11.31	11.31	10.81	10.81	10.88	10.50	10.63	13.38	14.25	14.13	15.75	17.13	17.13	18.75
12	14.75	14.50	13.38	13.38	12.88	12.88	12.75	12.75	12.50	16.13	16.63	16.50	18.00	19.63	20.50	21.63
14	16.00	15.75	14.63	14.63	14.25	14.25	14.00	14.25	...	17.75	19.13	19.00	19.38	20.50	22.75	...
16	18.25	18.00	16.63	16.63	16.25	16.25	16.25	16.00	...	20.25	21.25	21.13	22.25	22.63	25.25	...
18	20.75	20.50	18.69	18.69	18.50	18.50	18.25	18.25	...	21.63	23.50	23.38	24.13	25.13	27.75	...
20	22.75	22.50	20.69	20.69	20.50	20.50	20.50	20.25	...	23.88	25.75	25.50	26.88	27.50	29.75	...
24	27.00	26.75	24.75	24.75	24.75	24.75	24.75	24.25	...	28.25	30.50	30.25	31.13	33.00	35.50	...

GENERAL NOTES:

- (a) For reference, see Table 9 illustration beginning on previous page.
- (b) The gasket-thickness tolerance is ± 0.005 in. measured across the metallic portion of the gasket not including the filler, which may protrude slightly beyond the metal.
- © For limitations on the maximum flange bore for use with these spiral-wound gasket, see Table 16.

NOTES:

- (1) Inner rings are required for all PTFE filled gaskets and for Class 900 gaskets, NPS 24; Class 1500 gaskets, NPS 12 through NPS 24; and Class 2500 gaskets, NPS 4 through NPS 12 (see para. 3.2.5 and Table 12).
- (2) The gasket outside diameter tolerance for NPS 1/2 through NPS 8 is ± 0.03 in.; for NPS 10 through NPS 24, $+0.06$ in.; -0.03 in.
- (3) The gasket inside diameter tolerance for NPS 1/2 through NPS 8 is ± 0.016 in.; for NPS 10 through NPS 24, ± 0.03 in.
- (4) The centering ring outside diameter tolerance is ± 0.03 in.
- (5) There are no Class 400 flanges in NPS 3 (use Class 600), Class 900 flanges in NPS 1/2 through NPS 1/2 through NPS 2 1/2 (use Class 1500), or Class 2500 flanges NPS 14 and larger.

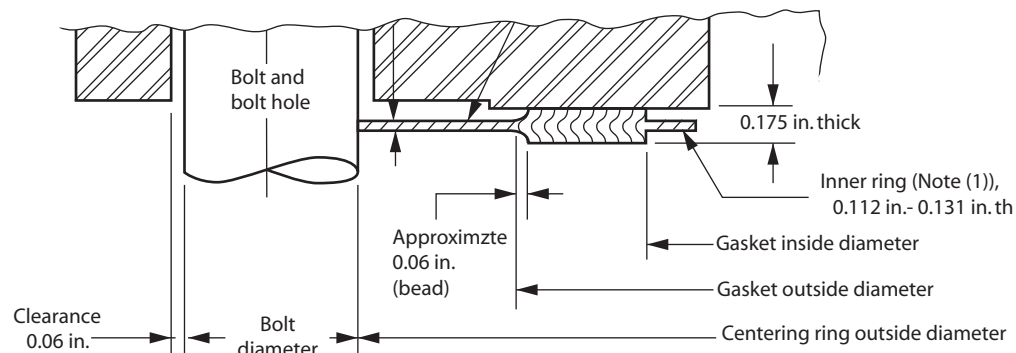


TABLE 11 DIMENSIONS FOR SPIRAL-WOUND GASKETS USED WITH ASME B16.47 SERIES B FLANGES

Flange Size (NPS)	Class 150			Class 300			Class 400			Class 600			Class 900 (1)		
	Gasket		Centering Ring	Gasket		Centering Ring	Gasket		Centering Ring	Gasket		Centering Ring	Gasket		Centering Ring
	Inside Diameter (2)	Outside Diameter (3)	Outside Diameter (4)	Inside Diameter (2)	Outside Diameter (3)	Outside Diameter (4)	Inside Diameter (2)	Outside Diameter (3)	Outside Diameter (4)	Inside Diameter (2)	Outside Diameter (3)	Outside Diameter (4)	Inside Diameter (2,5)	Outside Diameter (3,5)	Outside Diameter (4,5)
26	26.50	27.50	28.56	26.50	28.00	30.38	26.25	27.50	29.38	26.13	28.13	30.13	27.25	29.50	33.00
28	28.50	29.50	30.56	28.50	30.00	32.50	28.13	29.50	31.50	27.75	29.75	32.25	29.25	31.50	35.50
30	30.50	31.50	32.56	30.50	32.00	34.88	30.13	31.75	33.75	30.63	32.63	34.63	31.75	33.75	37.75
32	32.50	33.50	34.69	32.50	34.00	37.00	32.00	33.88	35.88	32.75	34.75	36.75	34.00	36.00	40.00
34	34.50	35.75	36.81	34.50	36.00	39.13	34.13	35.88	37.88	35.00	37.00	39.25	36.25	38.25	42.25
36	36.50	37.75	38.88	36.50	38.00	41.25	36.13	38.00	40.25	37.00	39.00	41.25	37.25	39.25	44.25
38	38.37	39.75	41.13	39.75	41.25	43.25	38.25	40.25	42.25	39.00	41.00	43.50	40.75	42.75	47.25
40	40.25	41.88	43.13	41.75	43.25	45.25	40.38	42.38	44.38	41.25	43.25	45.50	43.25	45.25	49.25
42	42.50	43.88	45.13	43.75	45.25	47.25	42.38	44.38	46.38	43.50	45.50	48.00	45.25	47.25	51.25
44	44.25	45.88	47.13	45.75	47.25	49.25	44.50	46.50	48.50	45.75	47.75	50.00	47.50	49.50	53.88
46	46.50	48.19	49.44	47.88	49.38	51.88	47.00	49.00	50.75	47.75	49.75	52.25	50.00	52.00	56.50
48	48.50	50.00	51.44	49.75	51.63	53.88	49.00	51.00	53.00	50.00	52.00	54.75	52.00	54.00	58.50
50	50.50	52.19	53.44	51.88	53.38	55.88	51.00	53.00	55.25	52.00	54.00	57.00
52	52.50	54.19	55.44	53.88	55.38	57.88	53.00	55.00	57.25	54.00	56.00	59.00
54	54.50	56.00	57.63	55.25	57.25	60.25	55.25	57.25	59.75	56.25	58.25	61.25
56	56.88	58.18	59.63	58.25	60.00	62.75	57.25	59.25	61.75	58.25	60.25	63.50
58	59.07	60.19	62.19	60.44	61.94	65.19	59.25	61.25	63.75	60.50	62.50	65.50
60	61.31	62.44	64.19	62.56	64.19	67.19	61.75	63.75	66.25	62.75	64.75	68.25

GENERAL NOTES:

- (a) For reference, see Table 11 illustration beginning on previous page.
- (b) The gasket-thickness tolerance is ± 0.005 in. measured across the metallic portion of the gasket not including the filler, which may protrude slightly beyond the metal.
- © For limitations on the maximum flange bore for use with these spiral-wound gaskets, see Table 18.

NOTES:

- (1) Inner rings are required for all PTFE gaskets and Class 900 gaskets, NPS 26 through NPS 48 (see para. 3.2.5 and Table 14).
- (2) The gasket inside diameter tolerance for NPS 26 through NPS 34 is ± 0.03 in., and the tolerance for NPS 36 through NPS 60 is ± 0.05 in.
- (3) The gasket outside diameter tolerance for NPS 26 through NPS 60 is ± 0.06 in.
- (4) The centering ring outside diameter tolerance is ± 0.03 in.
- (5) There are no Class 900 flanges NPS 50 and larger.

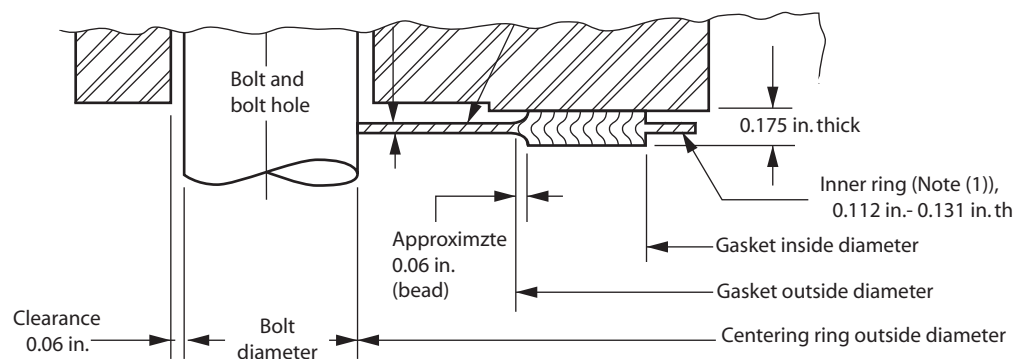


TABLE 10 DIMENSIONS FOR SPIRAL-WOUND GASKETS USED WITH ASME B16.47 SERIES A FLANGES

Flange Size (NPS)	Class 150			Class 300			Class 400			Class 600			Class 900 (1)		
	Gasket		Centering Ring	Gasket		Centering Ring	Gasket		Centering Ring	Gasket		Centering Ring	Gasket		Centering Ring
	Inside Diameter	Outside Diameter	Outside Diameter	Inside Diameter	Outside Diameter	Outside Diameter	Inside Diameter	Outside Diameter	Outside Diameter	Inside Diameter	Outside Diameter	Outside Diameter	Inside Diameter	Outside Diameter	Outside Diameter
(2)	(3)	(4)	(2)	(3)	(4)	(2)	(3)	(4)	(2)	(3)	(4)	(2,5)	(3,5)	(4,5)	
26	26.50	27.75	30.50	27.00	29.00	32.88	27.00	29.00	32.75	27.00	29.00	34.13	27.00	29.00	34.75
28	28.50	29.75	32.75	29.00	31.00	35.38	29.00	31.00	35.13	29.00	31.00	36.00	29.00	31.00	37.25
30	30.50	31.75	34.75	31.25	33.25	37.50	31.25	33.25	37.25	31.25	33.25	38.25	31.25	33.25	39.75
32	32.50	33.88	37.00	33.50	35.50	39.63	33.50	35.50	39.50	33.50	35.50	40.25	33.50	35.50	42.25
34	34.50	35.88	39.00	35.50	37.50	41.63	35.50	37.50	41.50	35.50	37.50	42.25	35.50	37.50	44.75
36	36.50	38.13	41.25	37.63	39.63	44.00	37.63	39.63	44.00	37.63	39.63	44.50	37.75	39.75	47.25
38	38.50	40.13	43.75	38.50	40.00	41.50	38.25	40.25	42.25	39.00	41.00	43.50	40.75	42.75	47.25
40	40.50	42.13	45.75	40.25	42.13	43.88	40.38	42.38	44.38	41.25	43.25	45.50	43.25	45.25	49.25
42	42.50	44.25	48.00	42.25	44.13	45.88	42.38	44.38	46.38	43.50	45.50	48.00	45.25	47.25	51.25
44	44.50	46.38	50.25	44.50	46.50	48.00	44.50	46.50	48.50	45.75	47.75	50.00	47.50	49.50	53.88
46	46.50	48.38	52.25	46.38	48.38	50.13	47.00	49.00	50.75	47.75	49.75	52.25	50.00	52.00	56.50
48	48.50	50.38	54.50	48.63	50.63	52.13	49.00	51.00	53.00	50.00	52.00	54.75	52.00	54.00	58.50
50	50.50	52.50	56.50	51.00	53.00	54.25	51.00	53.00	55.25	52.00	54.00	57.00
52	52.50	54.50	58.75	53.00	55.00	56.25	53.00	55.00	57.25	54.00	56.00	59.00
54	54.50	56.50	61.00	55.25	57.25	58.75	55.25	57.25	59.75	56.25	58.25	61.25
56	56.50	58.50	63.25	57.25	59.25	60.75	57.25	59.25	61.75	58.25	60.25	63.50
58	58.50	60.50	65.50	59.50	61.50	62.75	59.25	61.25	63.75	60.50	62.50	65.50
60	60.50	62.50	67.50	61.50	63.50	64.75	61.75	63.75	66.25	62.75	64.75	68.25

GENERAL NOTES:

- (a) For reference, see Table 10 illustration beginning on previous page.
- (b) The gasket-thickness tolerance is -0.005 in. measured across the metallic portion of the gasket not including the filler, which may protrude slightly beyond the metal.
- © For limitations on the maximum flange bore for use with these spiral-wound gaskets, see Table 17.
- (d) ASME B16.47 Series A flanges NPS 12 through NPS 24 have the same raised face dimensions as ASME B16.5 flanges.

NOTES:

- (1) Inner rings are required for all PTFE gaskets and Class 900 gaskets, NPS 26 through NPS 48 (see para. 3.2.5 and Table 13).
- (2) The gasket inside diameter tolerance for NPS 26 through NPS 34 is $+0.03$ in., and the tolerance for NPS 36 through NPS 60 is $+0.05$ in.
- (3) The gasket outside diameter tolerance for NPS 26 through NPS 60 is $+0.06$ in.
- (4) The centering ring outside diameter tolerance is $+0.03$ in.
- (5) There are no Class 900 flanges NPS 50 and larger.